

# The dynamics of homelessness: Findings from Journeys Home

*Rosanna Scutella*



THE UNIVERSITY OF  
MELBOURNE



MELBOURNE INSTITUTE  
of Applied Economic and Social Research

# ***Motivation***

- Counts of the homeless limited
- Important to understand homelessness as a dynamic process
- Longitudinal data critical to understanding pathways
- Important to include those at-risk/vulnerable (but not homeless) to examine entries to (as well as exits from) homelessness
- Journeys Home

# Rates of homelessness

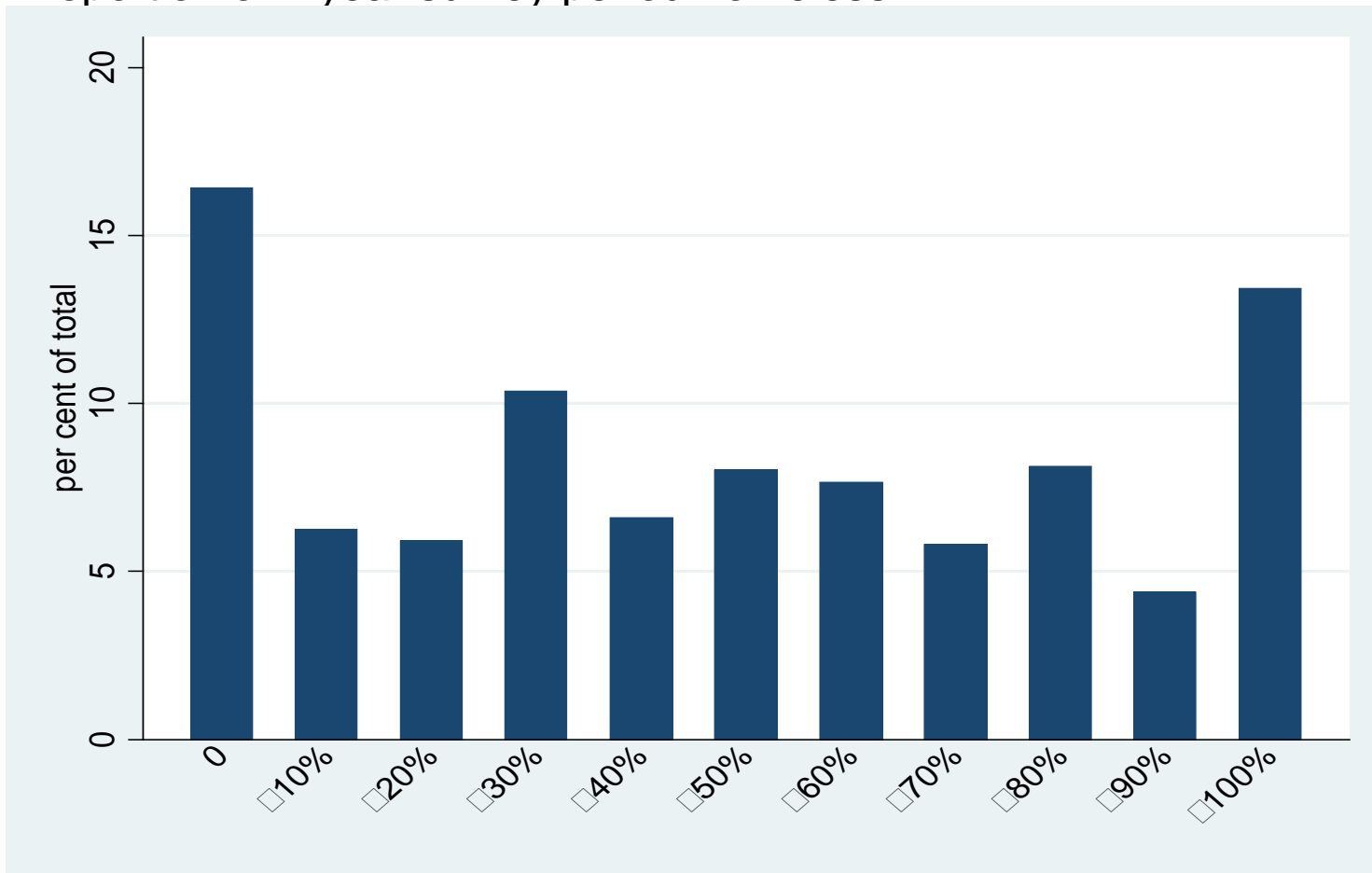
	Wave			
	1	2	3	4
<b>Homeless</b>	27.4	22.5	22.0	20.6
<i>Primary</i>	3.1	3.6	3.8	3.1
<i>Secondary</i>	12.1	8.2	7.1	7.8
<i>Tertiary</i>	12.3	10.7	11.2	9.6
<b>Not homeless</b>	72.6	77.5	78.0	79.4
<b>Total (%)</b>	100.0	100.0	100.0	100.0
<b>Total (Valid N)</b>	1674	1512	1460	1440

# Homeless transitions, w1 to w4

	%
Homeless in all waves	7.7
Homeless in three consecutive waves	4.1
Homeless in two consecutive waves	8.3
Cycling	3.0
Homeless in one wave	21.9
Not homeless in any wave	55.8
Total (Valid N)	1,291
H = Homeless; NH = Not homeless (housed)	

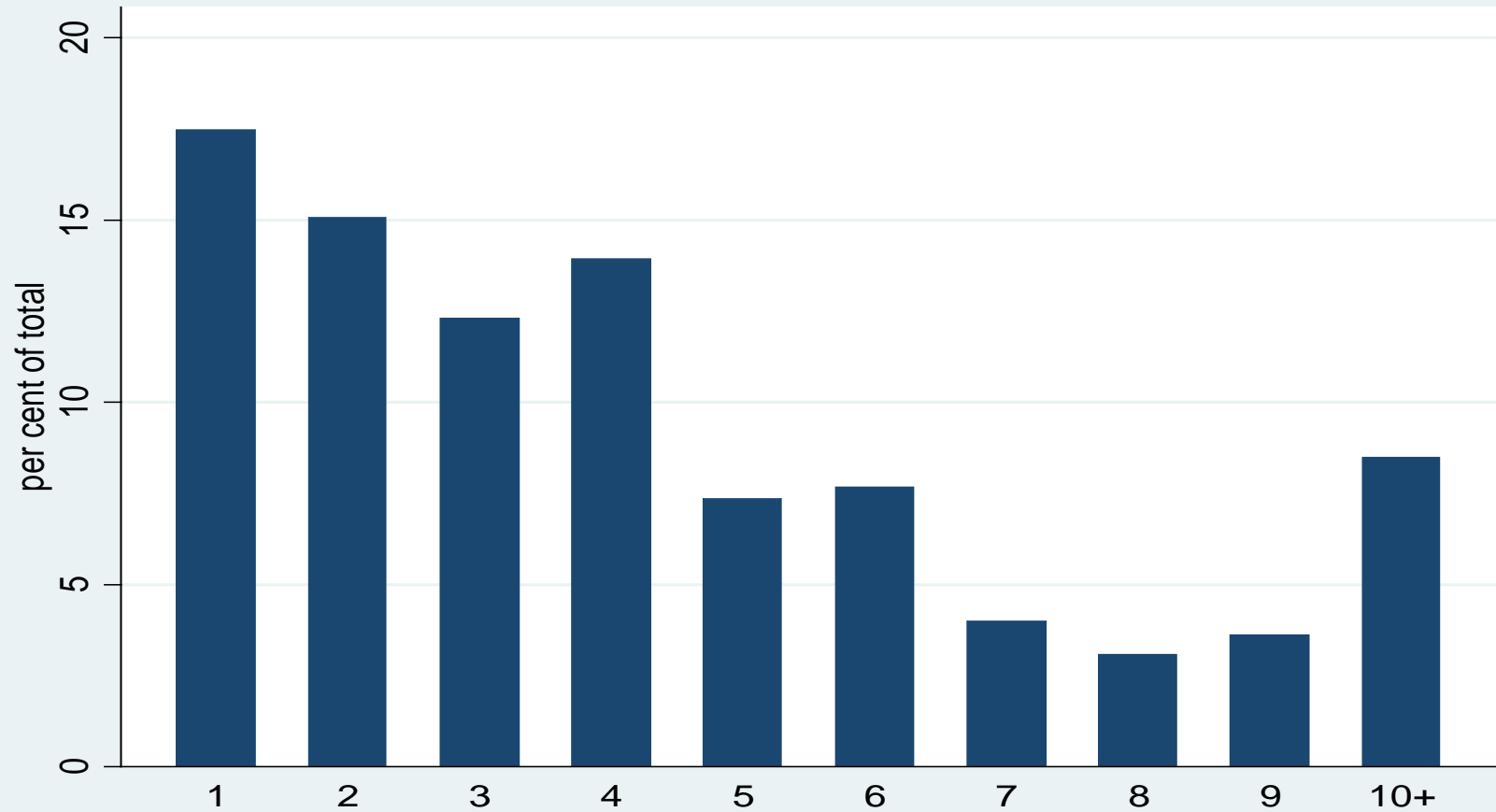
# Risk of homelessness over 2 years

Proportion of 2 year survey period homeless



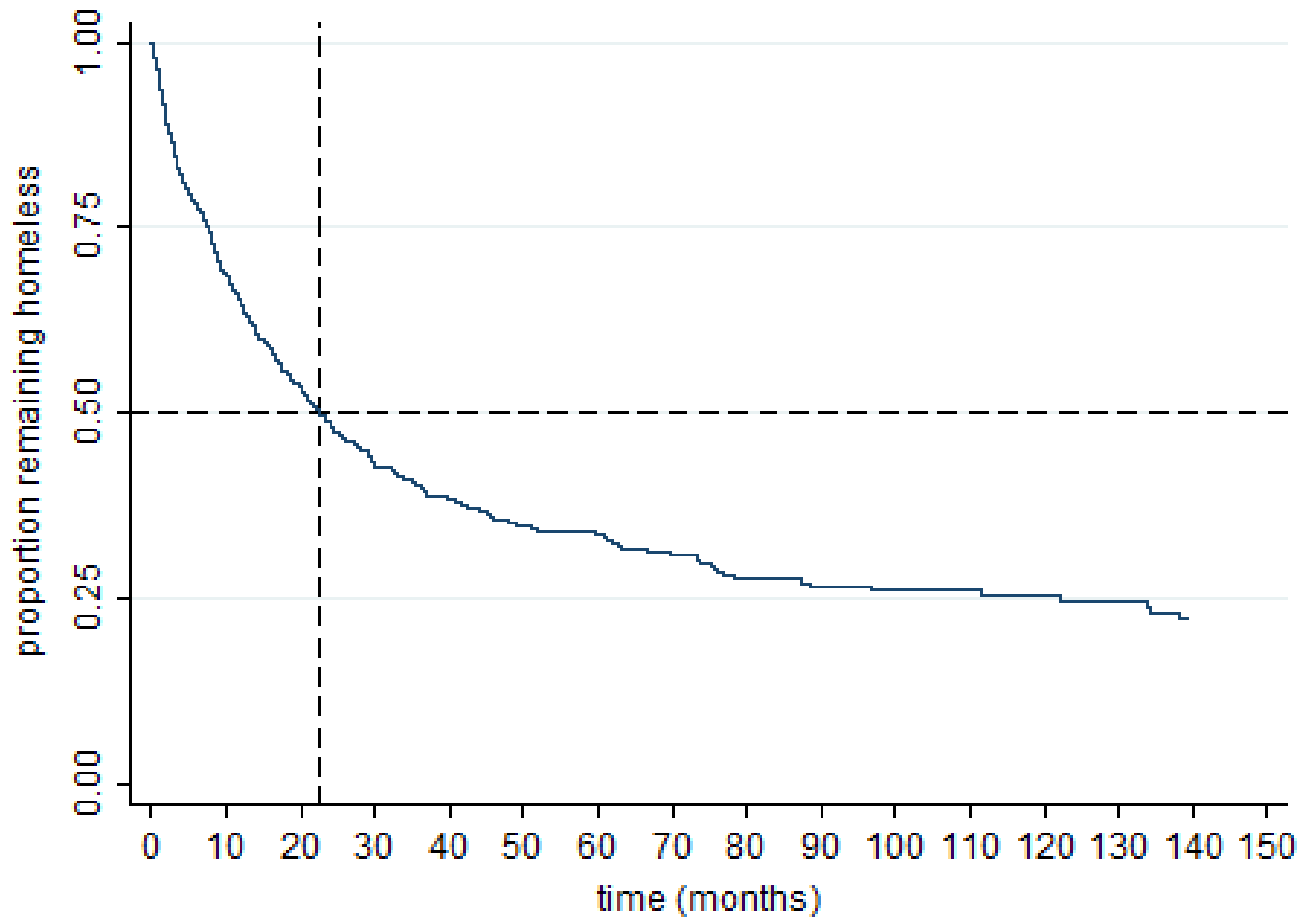
# Housing mobility

Number of places lived over 2 year survey period

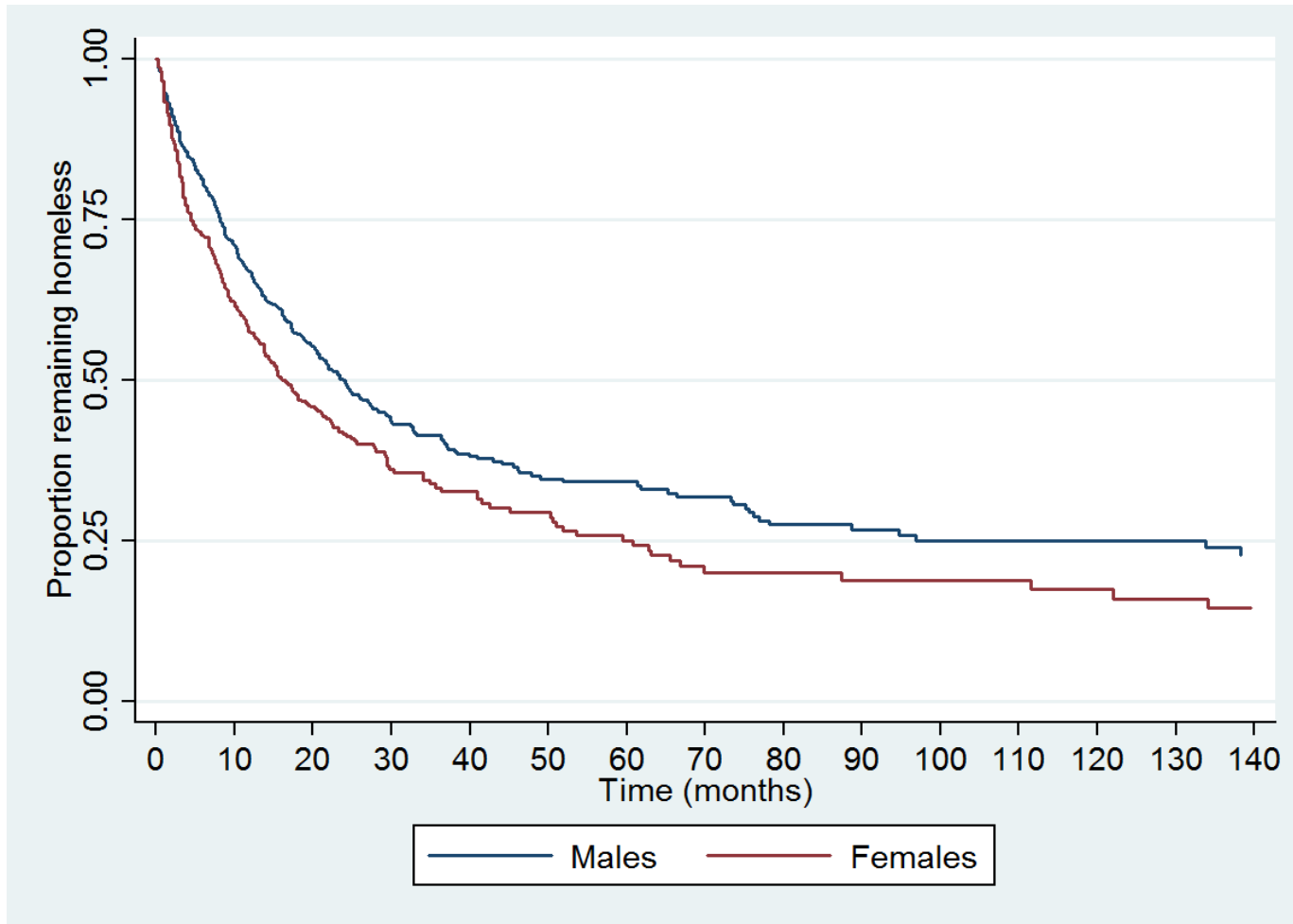


# Homeless duration

Homelessness 'survival' function

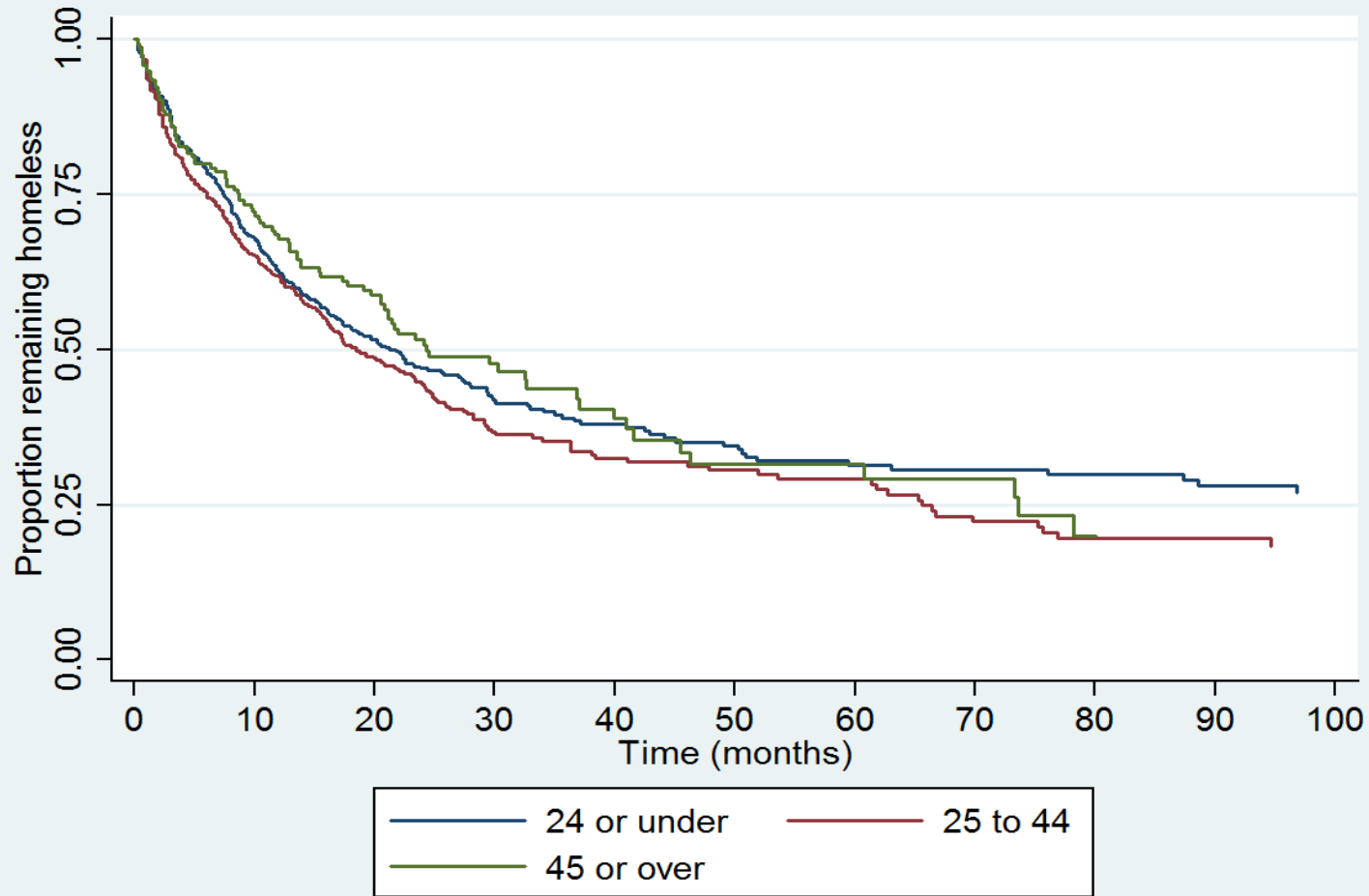


# Homeless duration by gender

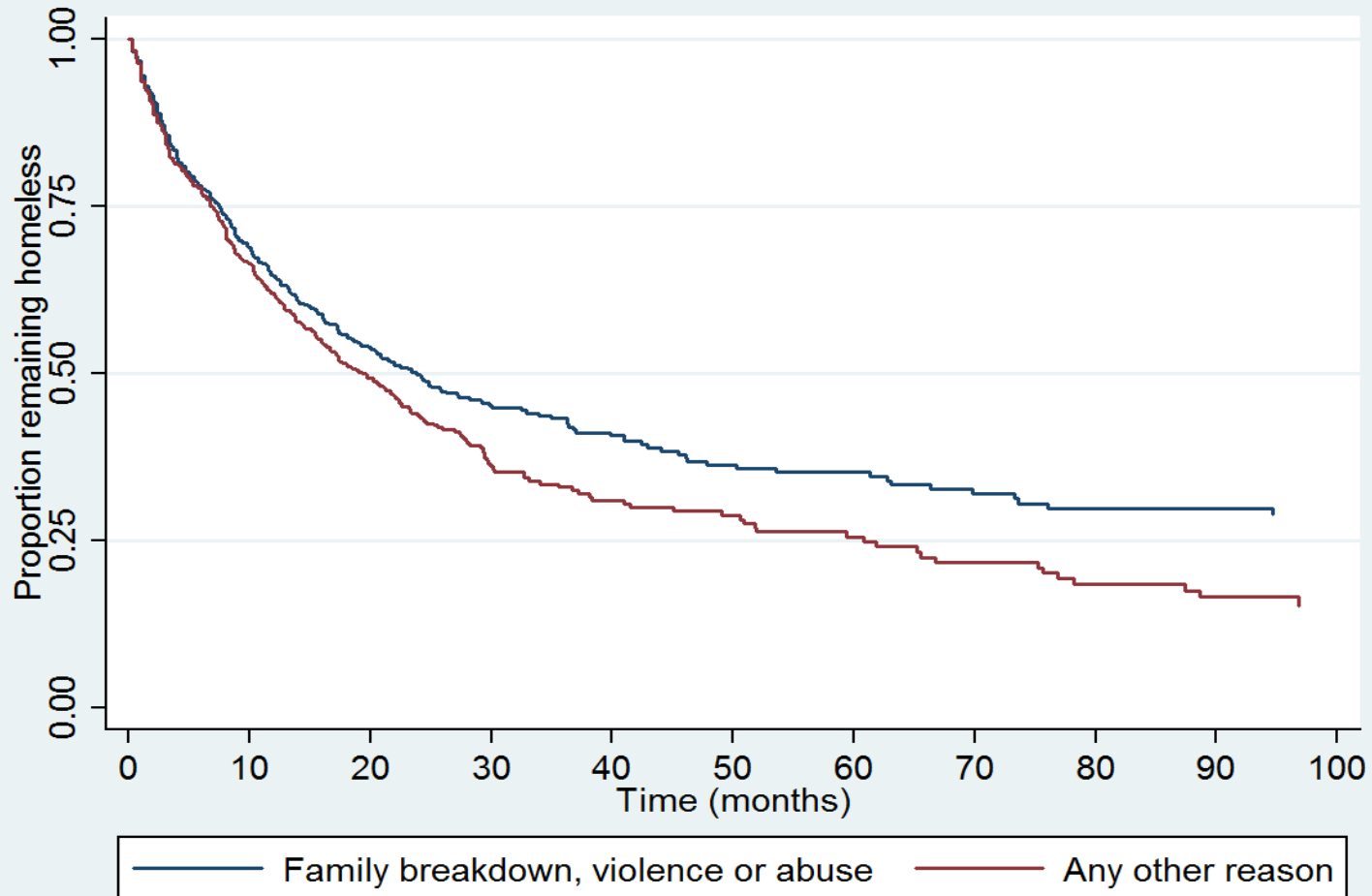




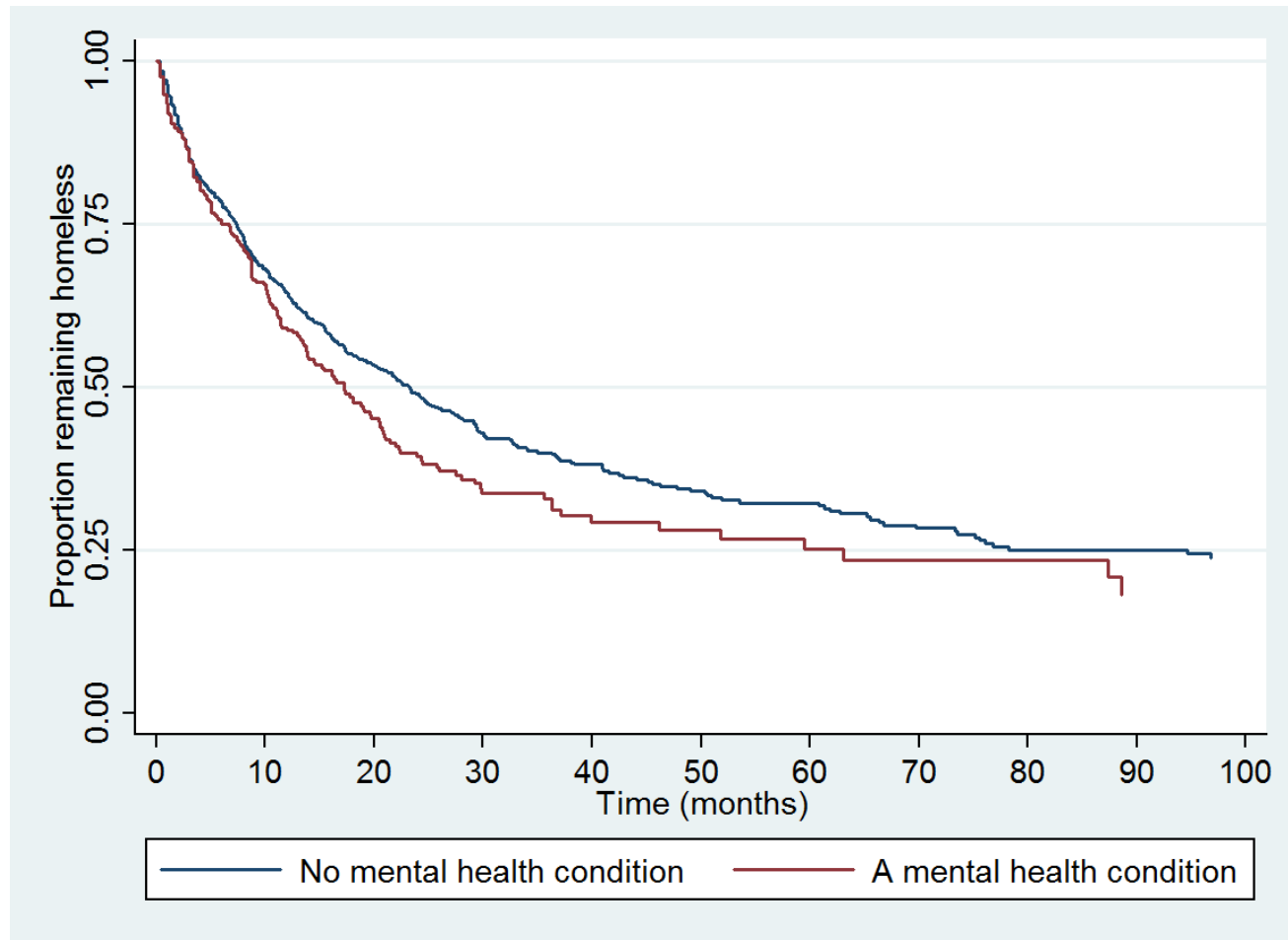
# Homeless duration by age



# Homeless duration, by reason first homeless

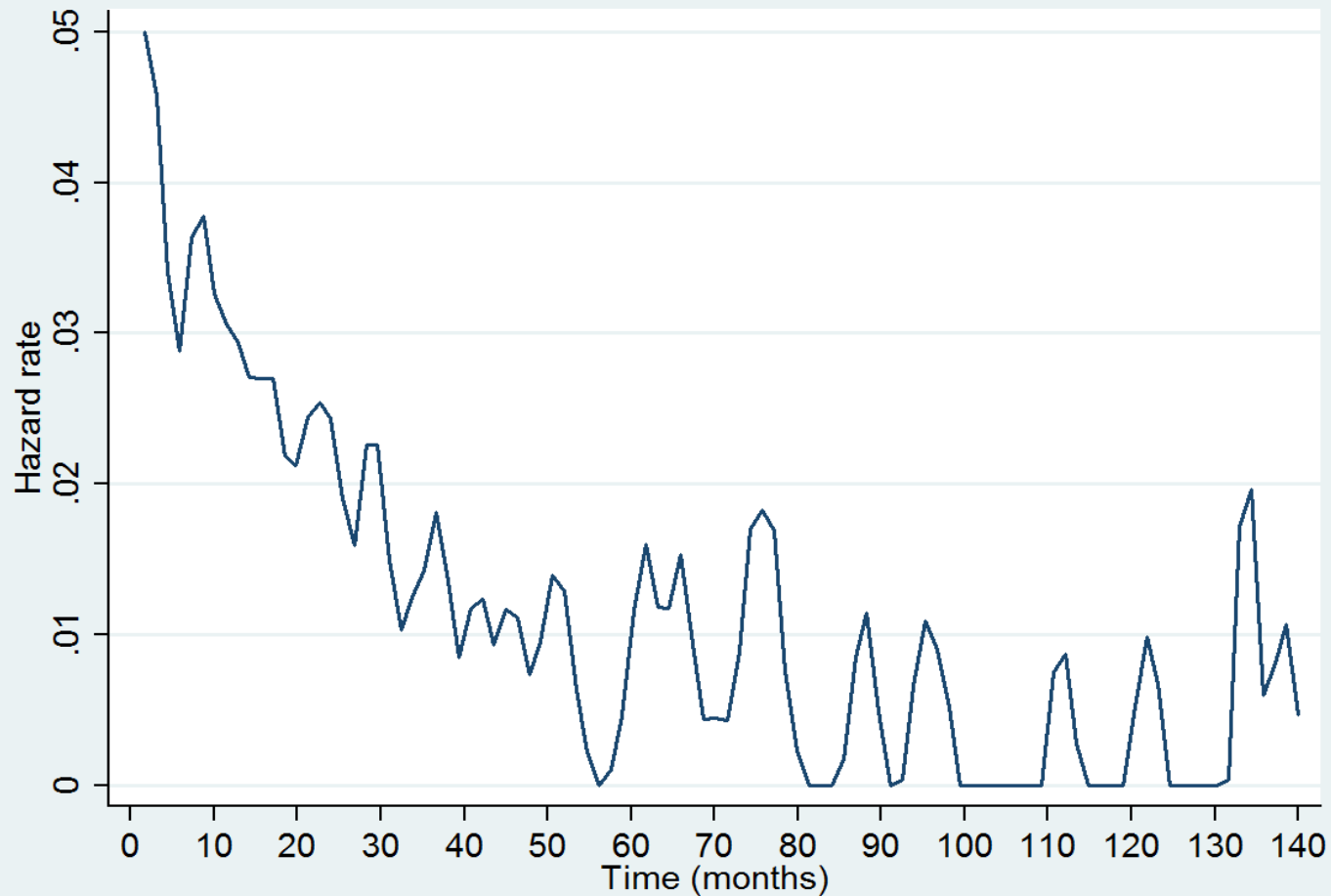


# Homeless duration by prior mental health condition



# Duration dependence?

Homelessness hazard function



# Other topics in upcoming report

- More on homeless duration
- Mental health and homelessness
- Psychological distress and homeless duration
- Substance use and homeless
- Child violence and adult re-victimisation

# Concluding comments

- Important to look at dynamics of homelessness
- Homelessness persistent for many
- And movements into and out of homeless also common
- Different dynamics across groups
- Huge potential in JH to add to limited evidence base (national and international)

# *Further information*

---

- [http://www.melbourneinstitute.com/journeys\\_home/](http://www.melbourneinstitute.com/journeys_home/)

# Hazard: primary homelessness

